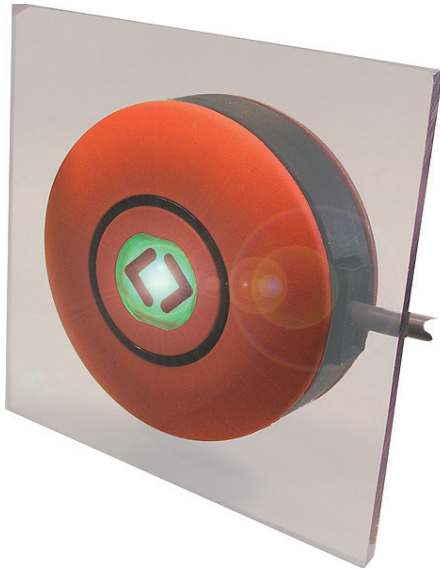




M-Door Double



Bouton poussoir et voyant doubles pour montage sur verre percé

- Surface active: Ø 40mm
- Normes ferroviaires
- Choix illimité de couleurs et pictogrammes rétro-éclairés
- Schémas standards ou personnalisés
- Montage facile et rapide (pas besoin d'outil)
- S'adapte automatiquement à l'épaisseur du support

Mechanical/Environmental characteristics:

- Operating temperature: -40°C (-40°F) /+70°C (+158°F)
- PAR56 mounting
- IP65 front and rear
- Polycarbonate protective cover
- Cable connection
- UV resistant

Standards:

- Design Compliant with CFR regulation 49 CFR229. 125
- Application EN 50155
- Shocks / vibrations EN 61373
- EMC EN 50121-3-2
- Fire/smoke NFPA130
- Environment EN 60068, EN 60529

Electrical characteristics:

- Power supply: 24-110 Vdc (-30%/+25%)
- Optimized power consumption
- Long service life: 60 000 h

Options:

- Light status feedback (volt free contact)
- Customized connector and cable length
- Light intensities can be adapted on request
- Mechanical interface mounting plate
- Glass protective cover

Optical characteristics:

- Ø170 (7") mm lit area

	US CFR version	Indian version	MAFELEC
	Intensity (cd)	Intensity (cd)	Mean consumption(W)
High beam	>200 00 cd	>300 000 cd	~35W
Low beam	Adjustable value from 30 000 to 120 000 cd		~20W

- Color temperature: 5600 K (cold white)