

1-2-3 Actuators

FOR POLE MOUNTING



Different possible configurations for the number of actuators: 1, 2 or 3 actuators.



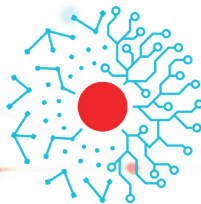
WALL MOUNTING
Only 1 actuator.



471 route de la Cuisinière
38490 Chimilin, France
+33 4 763 207 33
contact@mafelec.fr
www.mafelec.com

MAFELEC develops control and signaling solutions for harsh environments. From pushbuttons to switches, from control panels to door controls, MAFELEC offers solutions fully adapted to the needs of our partners.

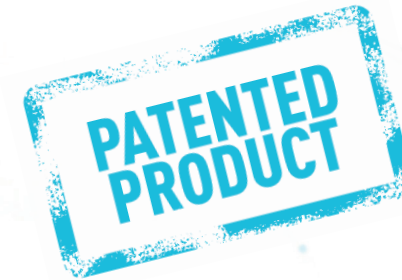
MAFELEC is part of the MAFELEC TEAM. This group of companies offers solutions in the fields of HMI, detection, protection and lighting, for railway, bus and coaches, industrial vehicles, industry, energy, defense, aeronautics and elevators.



MAFELEC TEAM

CREATING **TOGETHER** SMART AND SUSTAINABLE INTERFACES

MEMBERS OF THE MAFELEC TEAM



M-360

STOP REQUEST AND DOOR
CONTROL BUTTONS

Application

The M-360 is an innovative and patented handrail pushbutton, embedding 3 actuators and illuminated areas to provide 360° accessibility to all passengers. The haptic feedback (click effect), associated with the change of lighting color of all the buttons installed in the vehicle, confirms that the request has been taken into account.

M-360 can be declined with 1 or 2 actuators and a wall mounting version is also available to adapt the design whatever its position. Customization is a key point: pole diameter, color, marking, relief/braille or lighting are fully configurable to withstand customers design signature.

Buses and railway standards compliance: ECER10, ECER118, ECER107, ISO 16750, EN 45545-2, EN 50155, EN 61373.



Customization

BEZEL COLOR



ACTUATOR COLOR



ACTUATOR SYMBOL



LIGHTING

3 light options with customizable colors:

- white
- red
- green
- blue
- amber

MOUNTING TYPE

Pole mounting
(different pole diameter)

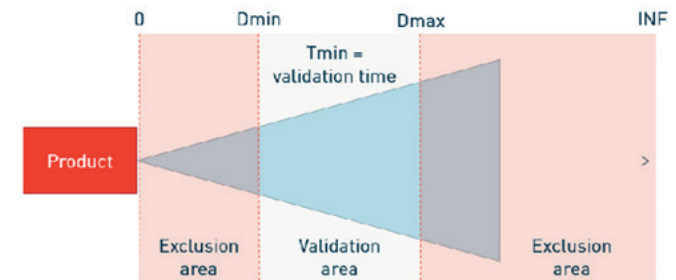


Wall mounting

Touchless

Passenger health and safety are now essential criteria for operators. That's why we are developing a touchless actuation. Thanks to its 3 actuators, the M-360 M-Safe can offer both contactless and pressing activation.

The distance and activation time of our touchless M-Safe technology shown below can be adjusted to limit unintended activation. The exclusion area close to the button allows visually impaired people to touch the button without activation.



Conditions of validation	Product response
[0-Dmin]	Touchless validation disabled
[Dmin-Dmax] Tmin	Touchless validation enabled
[Dmax-INF]	Touchless validation disabled