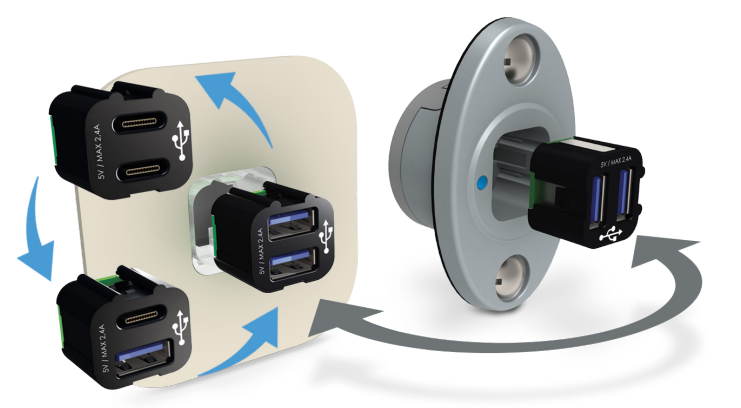




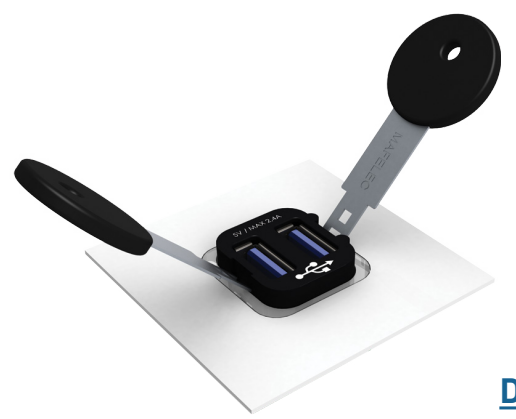
1

UPGRADE TYPE A TO TYPE C AFTER INSTALLATION



2

QUICK & EASY MAINTENANCE OF USB PORTS



Dismounting tool kit
Ref. : YST1173



MAFELEC
471, Route de la Cuisinière | 38490 Chimilin | France
T +33 4 763 207 33 | contact@mafelec.com
www.mafelec.com

MEMBERS OF THE MAFELEC TEAM



0001V1-07-2023-EN



M-CHARGE

M-CHARGE : A RELIABLE AND ADAPTABLE RANGE FOR YOUR NEEDS

With more than 50 years of experience in the railway industry, MAFELEC has developed a range of charging systems that are 100% compliant with railway standards in force (EN50155, EN45545-2, EN61373, CEI 60884-1, EN62684...) and meet the expectations of operators in terms of reliability and availability.

In addition to their beautiful aesthetics with modern backlighting, our power sockets are above all the most robust and enduring on the market with their 50,000 insertion/extraction cycles, thus guaranteeing a lifetime of use for the train.

Our USB sockets, type A, C, or both, with a maximum current of 2.4A per port, have been designed to guarantee operators simple and very quick maintenance thanks to a small module that can be removed from the front using two specific keys.

The width of our offer, configurable according to your needs, will allow you to define the solutions adapted to your different environments, whether to equip new trains or to refurbish an existing fleet.



M-USB CONVERTER

- 100-230 VAC / 1 Output 5 VDC / 2,4A
- 24-36 VDC / 2 Output 5 VDC / 2,4A
- 72-110 VDC / 2 Output 5 VDC / 2,4A
- Galvanic Insulation
- Electrical efficiency > 0,83
- MTBF > 500 000 hours
- Inter connection of converters
- Cage clamp connection
- EN50155, EN45545-2, EN61373
- IP20



M-USB SOCKET

Main features

- 5 USB 3.0 module Types : A, A+A, C, C+C, A+C
- Standard current per port : 0,5A / 1A / 2,4A
- Socket interconnection configurable with M-USB converters
- -25°C/+55°C operating temperature
- MTBF > 1,5 Million hours
- Insertion / extraction : > Type A, 5 000 cycles
> Type C, 10 000 cycles
- Marking customization
- Backlit option
- EN50155, EN45545-2, EN61373, EN62684, EN62680-3, EN62680-4
- IP20, IK07

Rear mounting

- Rear panel mounting
- Vertical or horizontal removable module orientation
- Interconnection of socket
- Cage clamp connection
- Module color customization
- Very compact fitting



M-USB SOCKET

Housing types

M-Door slim

- Front panel or pole mounting
- Interconnection of socket
- Vertical removable module orientation
- Cable output with customized connector
- Housing and module color customization



Panel Mounting

Pole Mounting

- ø30mm - ø35mm
- Pole adapter color customization



M-DOOR POWER SOCKET 230 VAC

Main features

- French Type E (NFC61-314) or German Type F (DIN49440-1)
- High insertion/extraction endurance of 50,000 cycles
- Children protection
- Interconnection of power sockets
- IP40 Front, IP20 Rear (Increased IP option)
- IK07
- Socket background color and marking customization
- Backlit option
- EN60884-1, EN50124, EN45545-2, EN50155, EN61373

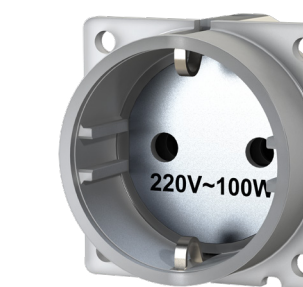


M-DOOR POWER SOCKET 230 VAC

Mounting Types

Rear mounting

- Vandal proof mounting
- Very compact fitting



Front mounting

- Vandal proof mounting
- Bezel material, shape and color customization

