

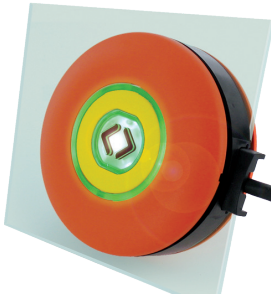
Definition chart

COMPANY :

Select your activity :

Project :

N° plan :



A
Interior



B
Exterior

1 - M-Door product

A : Indicator or
 Push button

B : Indicator or
 Push button

2 - Voltage (-30% / +25%)

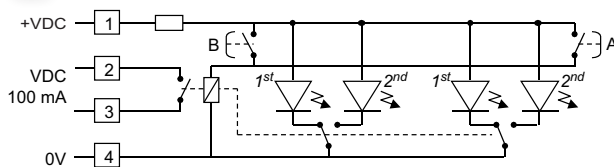
12V ... 36V

Other on request

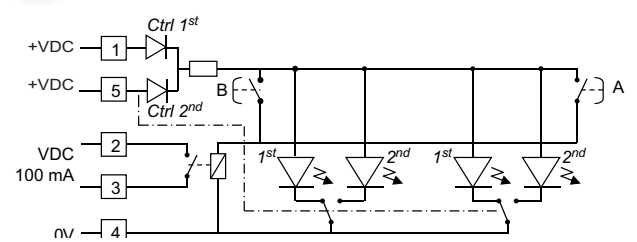
3 - Electrical layout

A&B : 2 push buttons

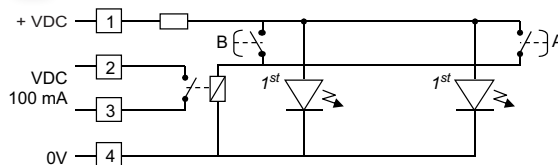
Automatic colors change



Externally controlled colors change



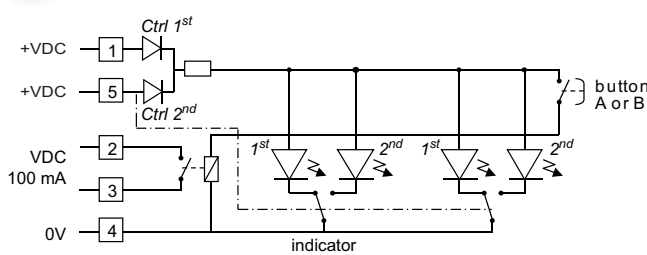
One color



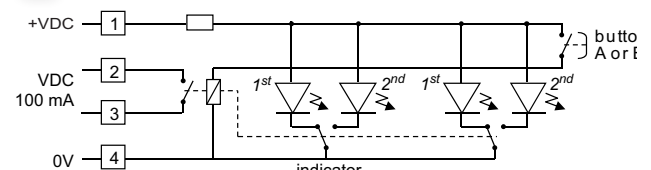
VDC = 12 - 36 V

A&B : 1 indicator + 1 push button

Externally controlled colors change

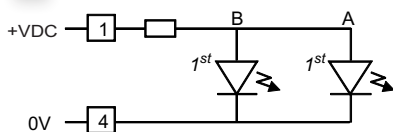


Automatic colors change



VDC = 12 - 36 V

A&B : 2 indicators



VDC = 12 - 36V ; 72 V ; 110 V

4 - LED color (2 colors max) :

Green
1st 2nd
A :
B :

Red
1st 2nd

Blue
1st 2nd

Other
1st 2nd

None
1st 2nd

5a - Push button

[View example](#)

Material : Plastic flush Flush symbol
 Raised symbol

or

Metal Flush symbol
 Raised symbol

Flush actuator
 Raised actuator

With lit hole
 Without lit hole



[View example](#)


Color : Green
 Yellow
 Black

Red
 Grey light
 White

Dark blue
 Orange
 Decorative chrome
(only for metal version)

Symbol : 
 
 SOS


 WC
 

Other symbol
 No symbol
 



Only for plastic version



<input type="checkbox"/> <input type="checkbox"/> 	<input type="checkbox"/> <input type="checkbox"/> 	<input type="checkbox"/> <input type="checkbox"/> 
--	---	--

(*) Raised symbol with «STOP» in braille

5b - Indicator

Symbol :
smoke effect

Other symbol
 No symbol

6 - Cable position (View from A) Standard lenght = 170 mm



Cable length :

For specific cable cover please contact us.

[View example](#)

6b - Connector

Type of connector :

For connector pin out please contact us.

7 - Bezel

Material :

Plastic

Metal

[View example](#)

Color :

	Green	Red	Dark blue	Light blue	Yellow	Light grey	Dark grey	Orange	Decorative chrome <small>(metal version only)</small>
A :	<input type="checkbox"/>	<input type="checkbox"/>	<input type="checkbox"/>	<input type="checkbox"/>	<input type="checkbox"/>	<input type="checkbox"/>	<input type="checkbox"/>	<input type="checkbox"/>	<input type="checkbox"/>
B :	<input type="checkbox"/>	<input type="checkbox"/>	<input type="checkbox"/>	<input type="checkbox"/>	<input type="checkbox"/>	<input type="checkbox"/>	<input type="checkbox"/>	<input type="checkbox"/>	<input type="checkbox"/>

Other versions on request

Because of the constant evolution in standards and materials, the texts and images of this document do not constitute a contractual agreement.

471 Route de la Cuisinière - F-38 490 CHIMILIN - FRANCE - Ph. : +33 (0)4 76 32 07 33 - Fax : +33 (0)4 76 32 54 11
 www.mafelec.fr - contact@mafelec.fr

Actuator

[Return](#)

Some example :



Metal flush actuator with raised symbol



Metal flush actuator for flush symbol with lit hole



Metal raised actuator for flush symbol with lit hole



Metal raised actuator with raised symbol



Metal raised actuator with raised symbol and lit hole



Plastic flush symbol



Plastic raised symbol



Plastic braille symbol

Actuator diameter : 40mm
 Raised actuator : 30mm high
 Raised symbol : 1mm high

Color

[Return](#)

The colors are only for indication because the rendering depending on the material (metal or plastic)



Red



Orange



Yellow



Green



White



Dark blue



Light blue



Dark grey



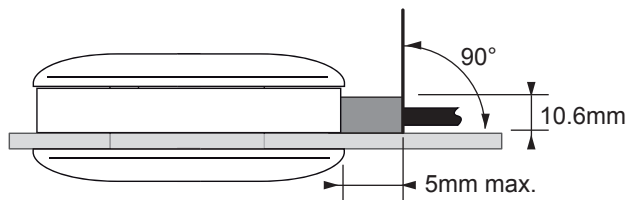
Light grey



Decorative chrome
 (metal version only)

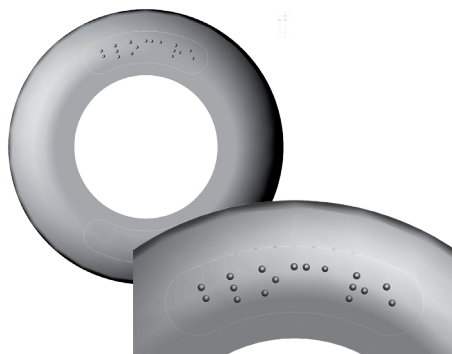
Cable cover

[Return](#)



Bezel - Dimensions (mm)

[Return](#)



Metal round shape with braille

