



MLHE/120

Headlight 120 mm

Product Configuration

Company

Project

Type of train

- New build Refurbishment

This file is interactive, Please 'Select' or 'click' when mentioned to guide you through your selection

To fully use the interactivity of the document Please open it with Adobe Acrobat PDF

1 POSITION

- Lower light Upper light

2 FIRE & SMOKE

- European standard EN 45545 Other

3 REQUESTED FUNCTIONS

- White head lamp full mode White head lamp dimmed mode Other

4 OPTICAL CHARACTERISTICS

4a Compliance requested

- EN 15153-3 (Only dimmed mode is requested) Other
Click [here](#) to see standard values

4b Attenuation of existing customer glass on the train

- No customer glass 15% -> 25% Tempered & light tilted glass
 0% -> 15% Standard vertical glass 25% -> 35% Tempered & stark tilted glass



5

FLASHING MODE

- No Yes

If yes

- Autonomous Non autonomous (Driven by train system)

Frequency
Min 0,5Hz - Max 3Hz

6

LIGHT STATUS FEEDBACK

- Potential free contact without common, open on defect Without feedback Other - Please a join drawing Click [here](#) to see diagrams

7

LENGTH

Standard: 500 mm ± 30 mm

2000 mm ± 50 mm

1000 mm ± 50 mm

Other mm

8

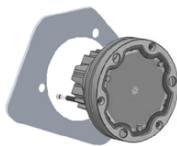
CONNECTOR

- Standard: without connector Other

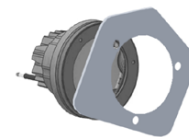
9

MOUNTING

- Front mount



- Rear mount



10

OTHER REQUEST / COMMENT

A

LUMINOUS INTENSITY



EUROPEAN STANDARD - EN 15153-3 / § 5.2 METRO APPLICATIONS

Lower head lamp

Function	Optical axis	+/-10°
Dimmed head lamp	12 000 to 16 000 cd	> 3 000 cd

B

CONNECTION & LIGHT STATUS FEEDBACK (open on defect)

