



# M-USB: REAR MOUNTING SOCKET & CONVERTER


## Product Configuration


Company

Project

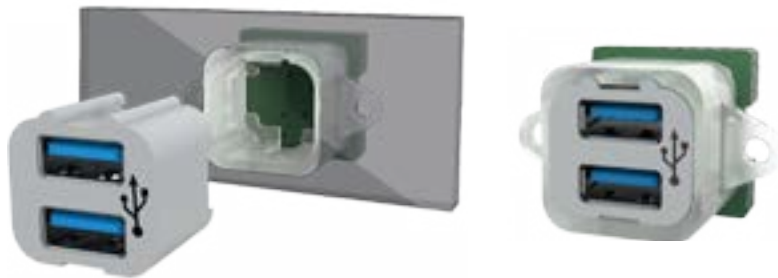
Select your activity

Part Nr

 This file is interactive, Please 'Select' or 'click' when mentioned to guide you through your selection

 To fully use the interactivity of the document Please open it with Adobe Acrobat PDF

USB Socket



Converter



### 1

#### USB MODULE TYPE



Single A



Double A



Single C



Double C



Double A&C

### 2

#### USB PORT ORIENTATION



Horizontal



Vertical

### 3

#### REMOVABLE USB MODULE COLOR



Light Grey  
(RAL7040)



Black  
(RAL9005)

Other on request  
(precise your color)



## 4

### MARKING INFORMATION FOR USERS

#### 4a Information



Without marking



USB Logo  
5V - Max current



A ZONE A  
B ZONE B  
Other on request  
(precise your information)

#### 4b Color



Black



White

## 5

### LIGHTING

Lighting position



Without lighting

White

Blue

Other on request  
(Precise your color)

## 6

### MAX CURRENT PER EACH USB PORT

0.5 A

1 A

2.4 A

## 7

### USB-CONVERTER ELECTRICAL LAYOUT

- Harness specification:** Wire gauge 1mm<sup>2</sup> or 1.5mm<sup>2</sup>  
Maximum distance between converter and the farthest USB socket:
- 3 m with wire gauge 1 mm<sup>2</sup>
  - 6 m with wire gauge 1.5 mm<sup>2</sup>

#### 7a Converter responsibility

Converter provided by MAFELEC [complete §7b]

Converter provided by customer [complete §7c]

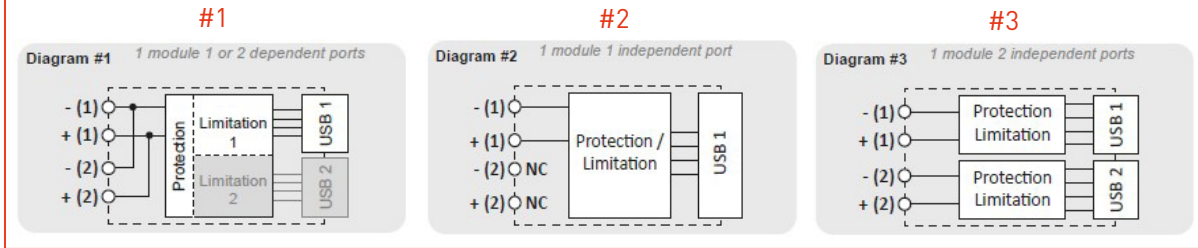
(Beware: conformity with USB standards are under customer responsibility)



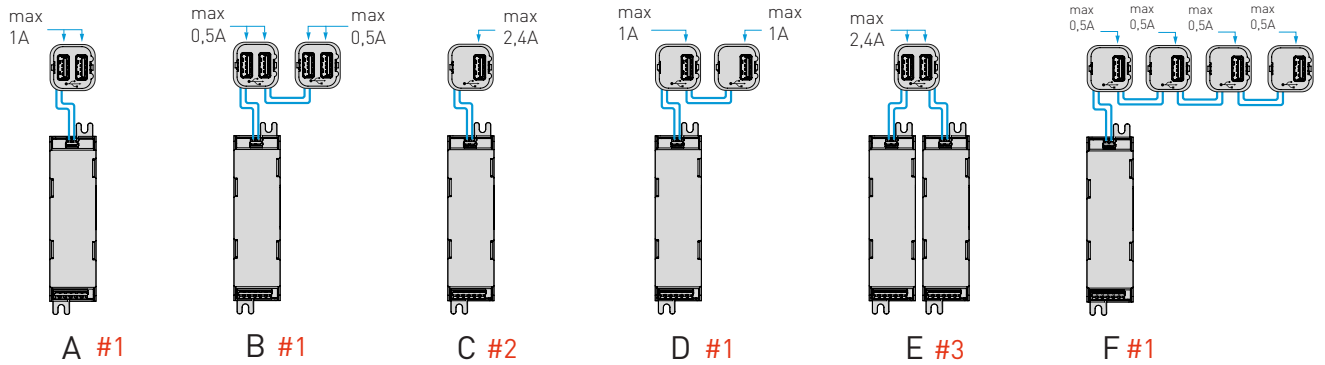


## 7b Converter type & configuration (with Mafelec converter)

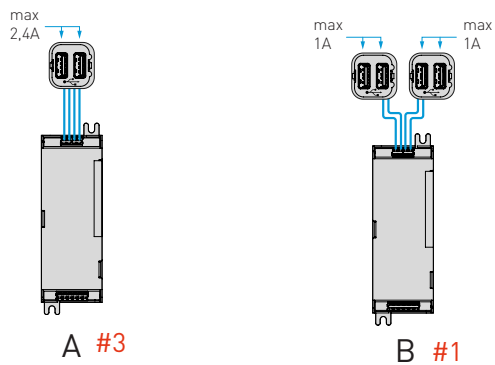
**Note:** USB socket electrical diagram



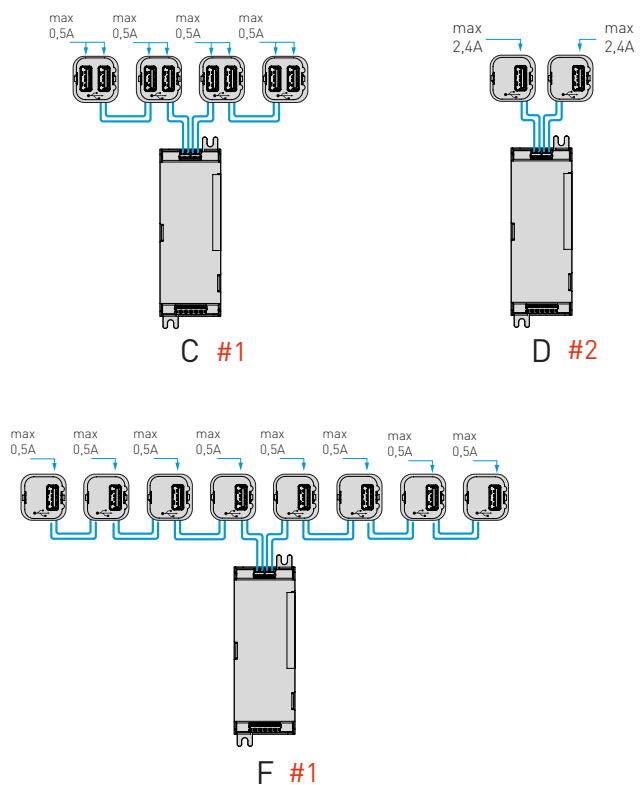
Input 100-230 VAC / 1 output 5 VDC-2.4A



Input 24-36 VDC / 2 output 5 VDC-2.4A each

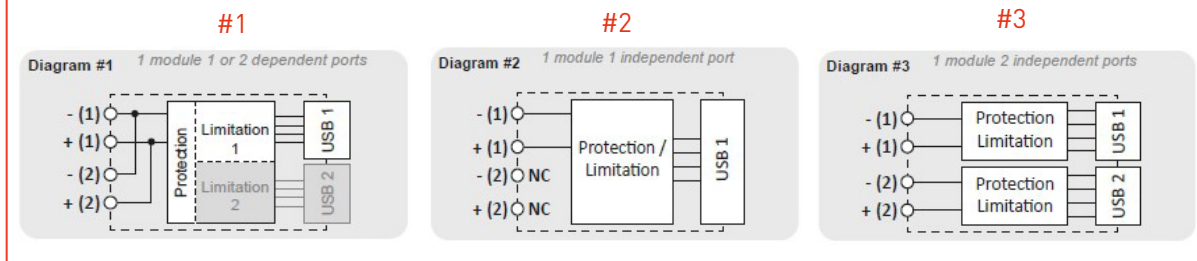


Input 72-110 VDC / 2 output 5VDC-2.4A each



## 7c Electrical connection (with customer converter)

**Note:** USB socket electrical diagram



Connecting marking table & connection type

**Note:** The max current "I" applied on our socket can not exceed 2.4 A

Connection type	Current via USB port	Front view	Back view	Electrical diagram
1 socket with 1 or 2 USB ports	$I \leq 1A$			#1
1 socket with 1 USB port	$I > 1A$			#2
1 socket with 2 USB ports	$I > 1A$			#3
2 sockets with 1 USB port each	$I \leq 1A$			#1 (x2)
4 sockets with 1 USB port each	$I \leq 0,5A$			#1 (x4)
2 sockets with 2 USB ports ea	$I \leq 0,5A$			#1 (x2)



8

## DISMOUNTING TOOL OF REMOVABLE USB MODULE

100 operations capacity

REF: YST1173



9

## OTHER REQUEST / COMMENT

Empty light blue box for additional requests or comments.

471 Route de la Cuisinière - F-38490 CHIMILIN- FRANCE

Ph : +33 (0)4 76 32 07 33

[www.mafelec.com](http://www.mafelec.com) - [contact@mafelec.fr](mailto:contact@mafelec.fr)

*Because of the constant evolution in standards and materials, the texts and images of this document do not constitute a contractual agreement*