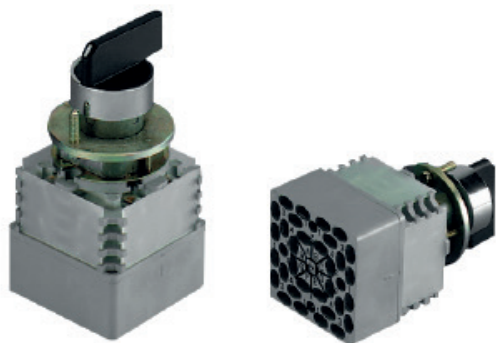




MOMENTARY-ACTION K4 SWITCHES



Momentary-action K4 switches with sliding contacts

- > 4-positions switches held
- > Suitable in polluted or dusty environments
- > Compact overall dimensions

Mechanical characteristics:

- Number of stages: 4 or 8 stages
- Crosshead level control
- Protection against electrical contact: IP2
- Degree of protection: IP40
- Mechanical endurance: 50 000 operations

Standards:

- Fire: plastic materials UL 94 V0

Electrical characteristics:

- Rated working voltage: 72V DC (from 50 to 90V)
- Rated thermal current: 4A
- Connections:
 - 4 stages: 16 tabs of 6,35mm
 - 8 stages: 32 tabs of 6,35mm

Mounting:

- Front panel hole, 22,5mm dia.
- Securing with 2 set screws

