



# M-360



## M-360/W stop request pushbutton for wall mounting

- M-360/P design style
- Color blind lighting design
- Haptic feedback actuation (click effect)
- Vertical or horizontal installation

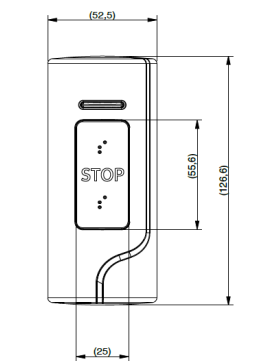
### Mechanical characteristics:

- Wall mounting
- Vertical or horizontal orientation
- IP40 protection
- IK07 impact resistant
- Actuation stroke: 1.8mm
- Mechanical service life: 4 000 000 operations
- Operating temperature: -30°C / +70°C
- Possible configuration on generic drawing

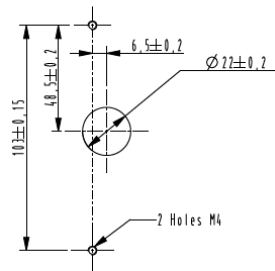
### Options :

- Color, marking, relief and light customization
- Adapted wiring harness

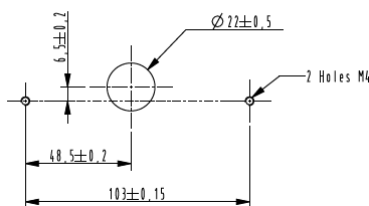
### Dimensions:



#### Vertical mounting



#### Horizontal mounting



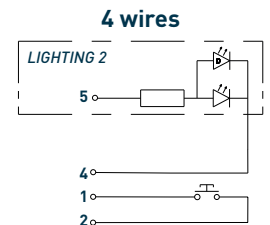
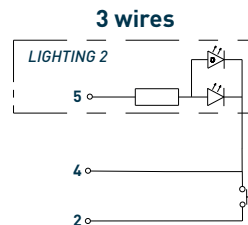
### Standards:

- EMC ECER10, EN 50121-3-2
- Fire & smoke ECER118, EN 45545-2
- Environment ISO 16750, EN 50155, EN 60529, CEI 62262, EN 61373
- REACH / RoHS

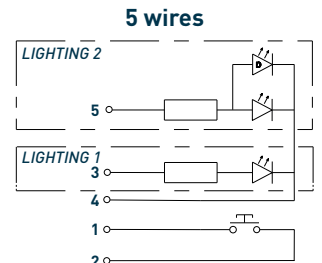
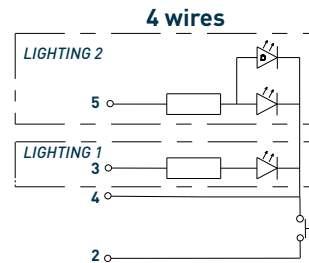
### Electrical characteristics:

- Voltage: 12Vdc or 24Vdc
- Illumination colors: white, red, blue, green, amber

### Single color schematic:



### Dual color schematic:



### Connector output - Part number : Molex 502443-0570

Pin n°	Function
1	Common switch
2	SW-OUT
3	+xxVDC Lighting 1
4	0V
5	+xxVDC Lighting 2

