



MAFELEC

Creating control and signalling solutions for harsch environments

# Lighting box

## LED lighting



- Optimized power consumption
- Anti-fog system
- Application for extreme cold - 50°C



### Standards:

- |                   |                           |
|-------------------|---------------------------|
| • Application     | EN 50155                  |
| • EMC             | EN 50121-3-2              |
| • Shock,vibration | EN 61373                  |
| • Environment     | EN 60068, EN 60529        |
| • Fire / smoke    | NF F 16-101/102, EN 45545 |

### Mechanical characteristics:

- Zamak box (chromating and paint)
- IK 06
- Coated glass thickness: 5mm
- Cable gland PG16
- Fixing: 4 screws M4
- Integrated anti condensation valve

### Electrical characteristics:

- 3 LED power
- Regulated current
- Polarity reversal protection
- Connection: Faston type
- Supply voltage: 24 VDC, 72 VDC, 110 VDC (- 30% / + 25%)
- Consumption: nominal power 2 W, max. 5 W

### Environmental Characteristics:

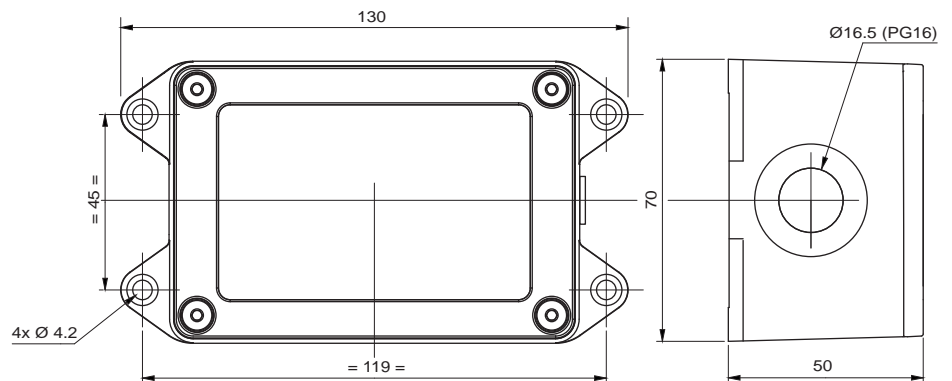
- Casing IP 66 (Sealing connection to be defined with the customer)
- Resistance to salt mist: 96h
- Operating temperature: - 50° +70°

### Optical characteristics:

- Opening angle: 40° / 60°
- 170 to 250 Cd in the axis.
- White (daylight) 5000k

### Dimensions:

Dimensions in mm



AEROSPACE & DEFENCE



COACHES & BUSES



RAILWAY



INDUSTRY



ENERGY



PLEASURE BOAT



VERTICAL TRANSPORT



INDUSTRIAL VEHICLES



OFFSHORE & MINING

MAFELEC  
www.mafelec.com

Textes et images non contractuels

(update 2017/06)