

Company\* :

Select your activity\* :

Project :

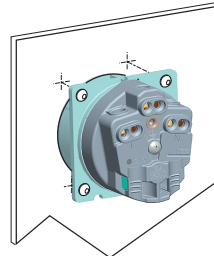
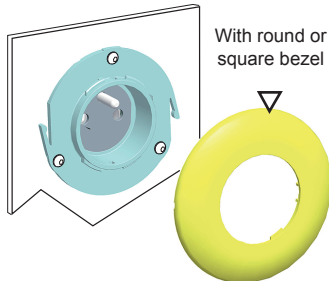
N° plan :

\* Mandatory fields

## 1 - Mounting

Front mounting  
with bezel

Rear mounting  
without bezel



[View example](#)

## 2 - Type of product

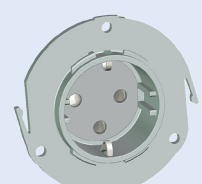
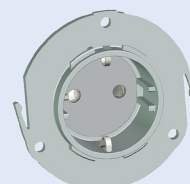
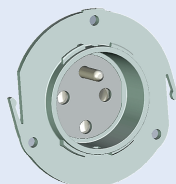
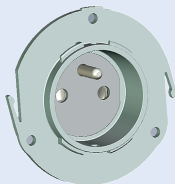
(presented examples :  
front mounting)

Outlet NCF61314

Outlet NCF61314  
protected electrical  
network

Outlet DIN49440

Outlet DIN49440  
protected electrical  
network



Non illuminated

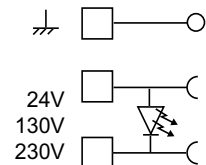
Illuminated

## 3 - Electrical characteristics for illuminated socket

Operating voltage :  24 V

130 V

230 V



## 4 - Color of LED

White

Green

Red

Blue

Amber

Other

## 5 - Bezel for front mounting

Shape :  Round plastic

Round metal

Front Label, for rear mounting  
(contact us)

Square metal

Round metal  
(with 2 areas of marking)

Color :  Green

Red

Dark blue

Light blue

Yellow

Light grey

Dark grey

Orange

Decorative chrome  
(for metal version only)

[View example](#)

## 6 - Back of the outlet

Color :  Light grey (standard)

Other (contact us)

Red (protected electrical network)

[View example](#)

## 7 - Sealing

Plug for front side - IP66  
(NCF61314 version only)

[View example](#)

## 8 - Accessory and tool (options)

Safety mis-connection device for  
protected electrical network  
to assemble on male plug

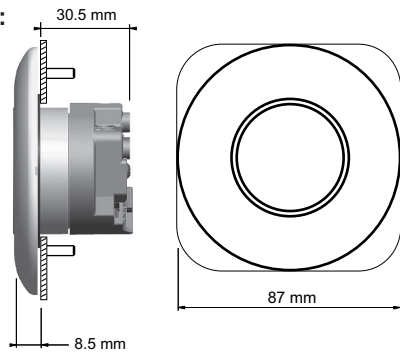
Dismounting tool for bezel  
(front mounting)

[View example](#)

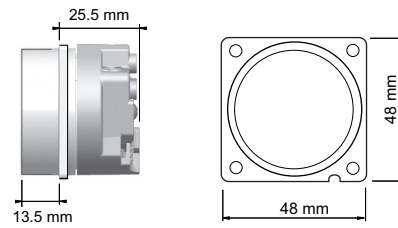
## Dimensions (mm)

[Return](#)

Front mounting :



Rear mounting :



## Bezel - Plate

[Return](#)

Round shape, metal or plastic with areas of marking (text or Braille)



Square shape, metal



Label or plate for rear mounting (contact us)



## Colors of bezels

[Return](#)

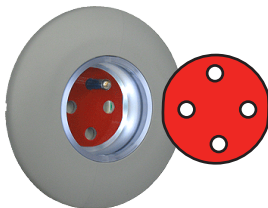
Colors are given as a rough guide and can vary according to the material (metal or plastic)



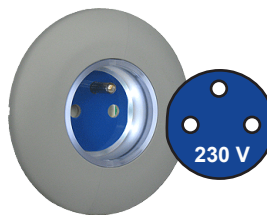
## Back colors of the customized socket

[Return](#)

ex: outlet with protected electrical network



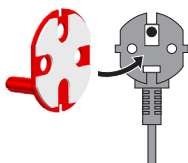
ex : other color and marking



## Accessories and tool

[Return](#)

Safety mis-connection device for protected electrical network to assemble on male plug



Plug for front - IP66 (NFC61314 version only)



Dismounting tool for bezel (front mounting)



Other versions of socket on request